

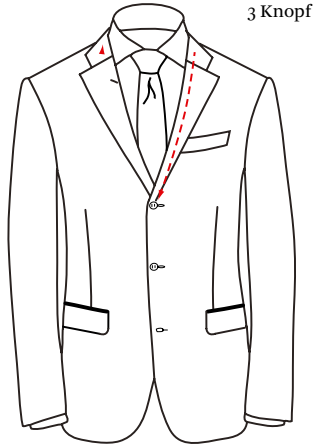


MASSNAHME

FORMEN & OPTIONEN

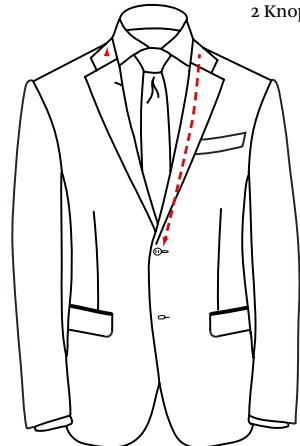


ANZUG



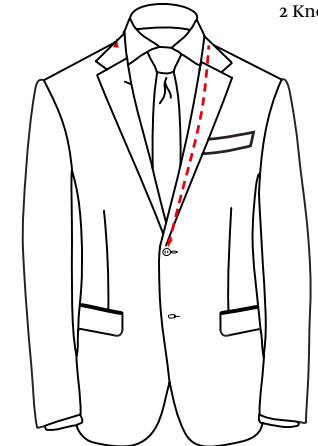
3 Knopf

FALLENDEN FACON



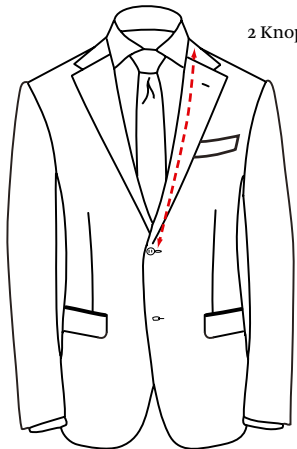
2 Knopf

FALLENDEN FACON



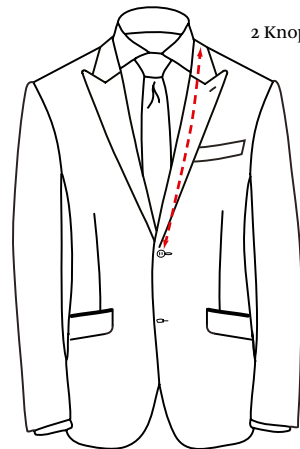
2 Knopf

FALLENDEN FACON



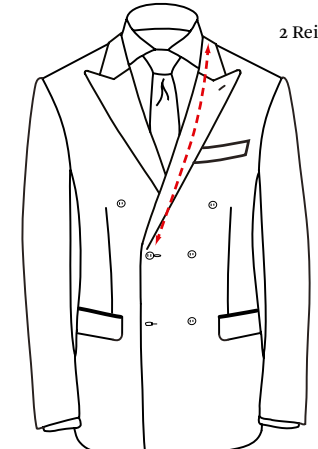
2 Knopf

FALLENDEN FACON



2 Knopf

SPITZFACON

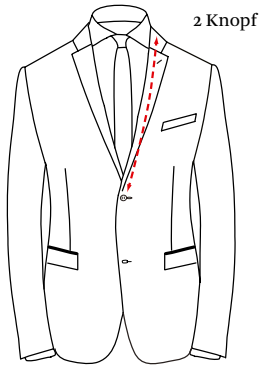


2 Reiher

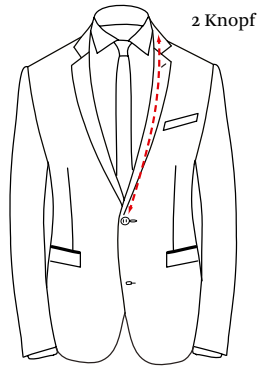
SPITZFACON



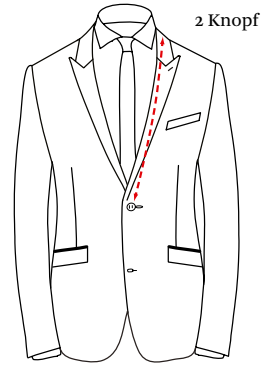
ANZUG



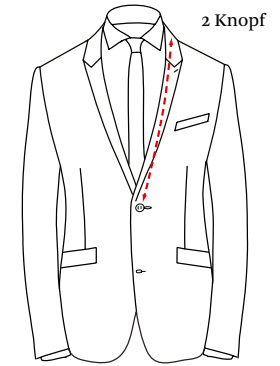
FALLENDEN FACON



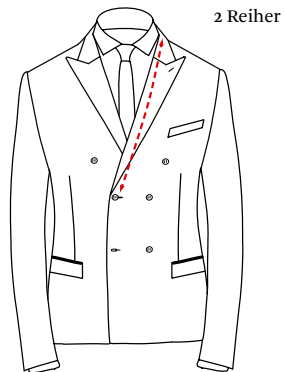
FALLENDEN FACON



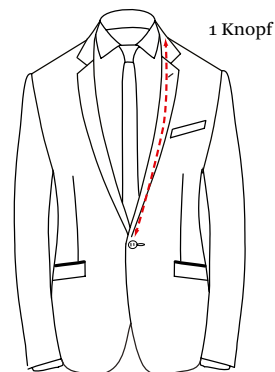
SPITZFACON



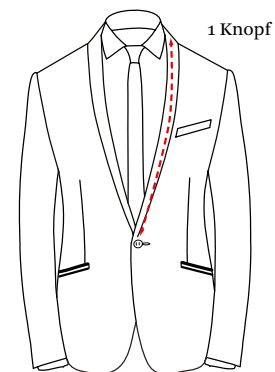
SPITZFACON



SPITZFACON



FALLENDEN FACON



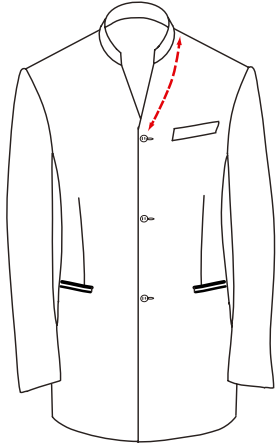
SCHALKRAGEN



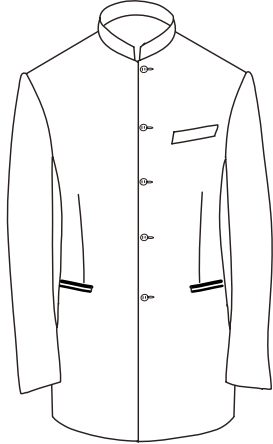
Schalkragen mit 1 cm
Applikation auf dem
Facon außen



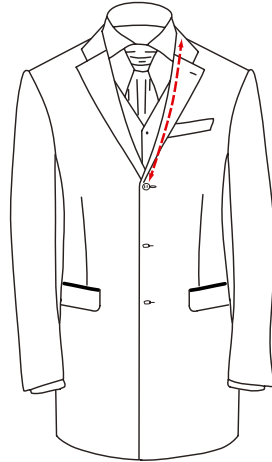
ANZUG



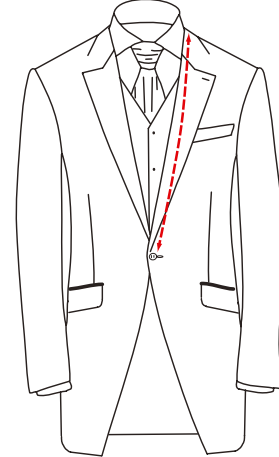
OFFENER MAO-KRAGEN



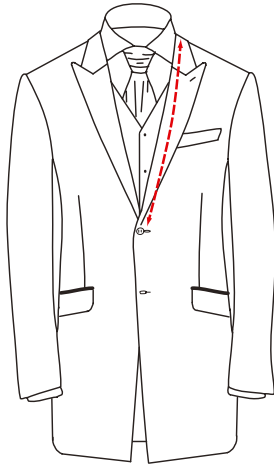
HOHER MAO-KRAGEN



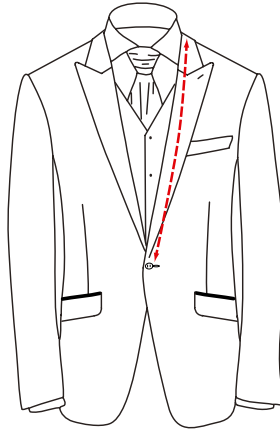
FALLENDEN FACON



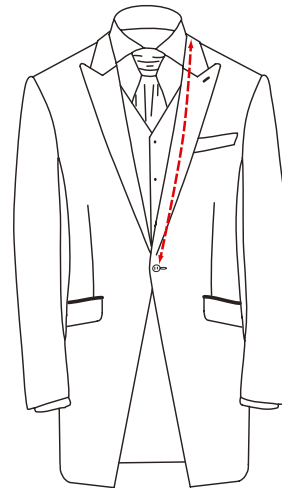
FALLENDEN FACON



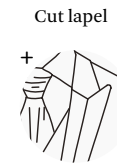
SPITZFACON



SPITZFACON

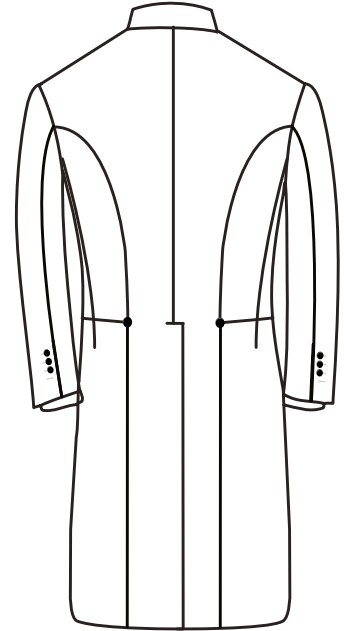
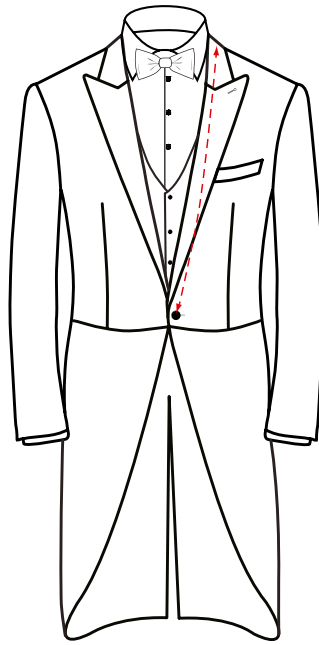
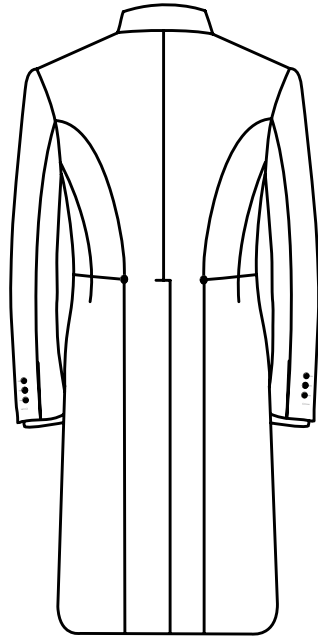
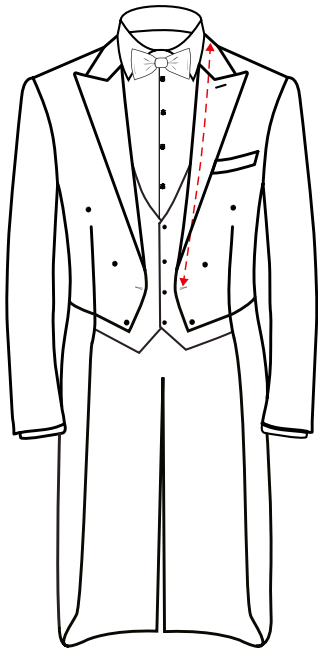


SPITZFACON

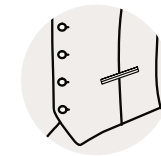
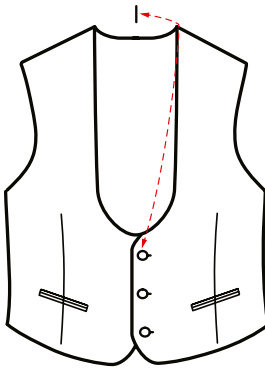
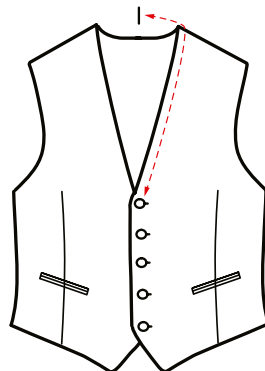
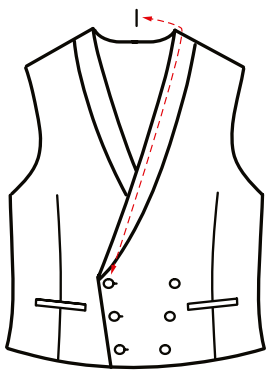
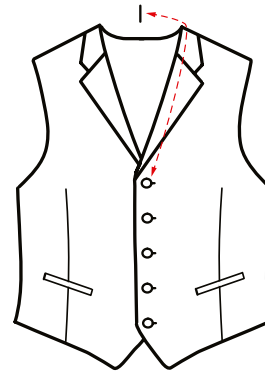
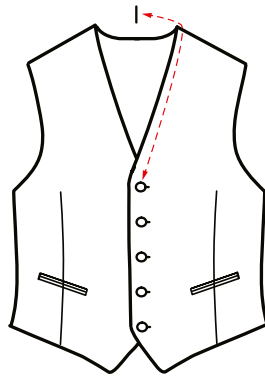
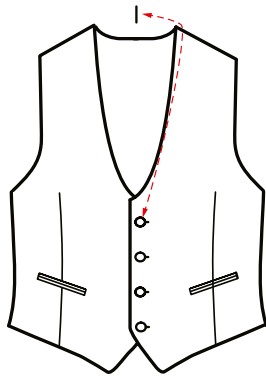




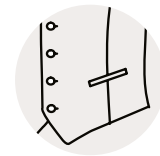
ANZUG



WESTEN

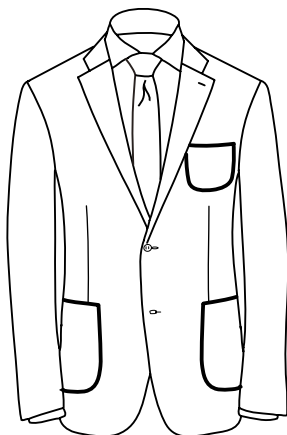


Doppelpaspel Tasche

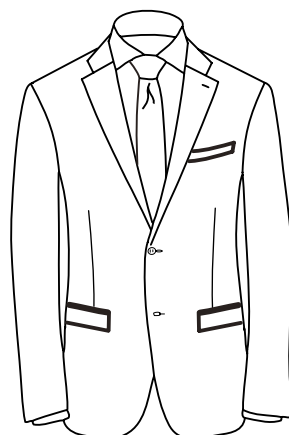


Leistentasche

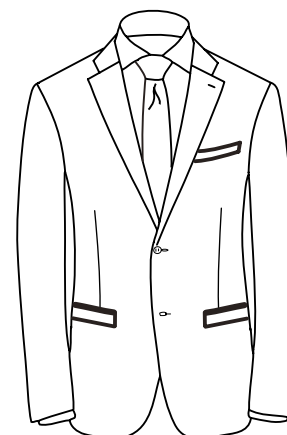
SONDERTASCHEN



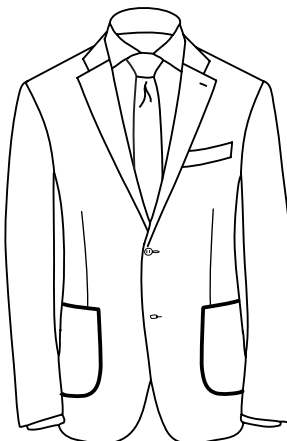
3 AUFGESETZTE
TASCHEN



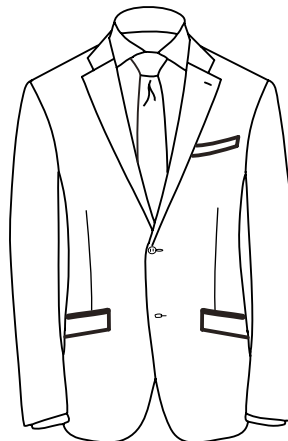
4,5 CM PATTE SCHMALER
BRUSTTASCHE



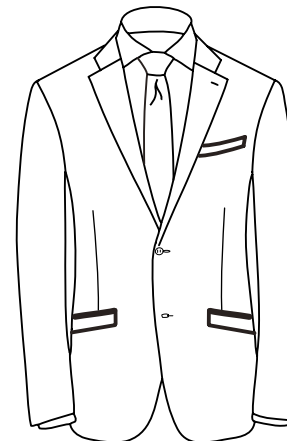
4 CM PATTE SCHMALER
BRUSTTASCHE



2 AUFGESETZTE
TASCHEN



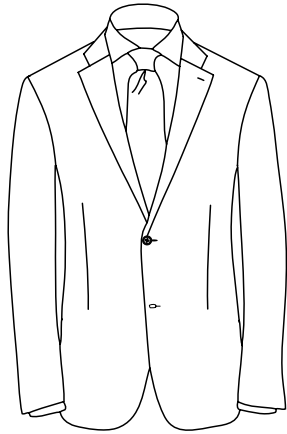
4,5 CM PATTE SCHMALER
BRUSTTASCHE



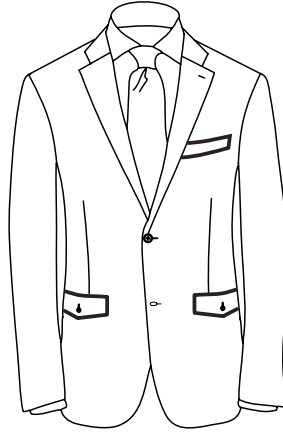
4 CM PATTE SCHMALER
BRUSTTASCHE



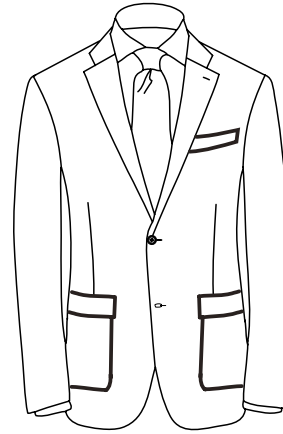
SONDERTASCHEN



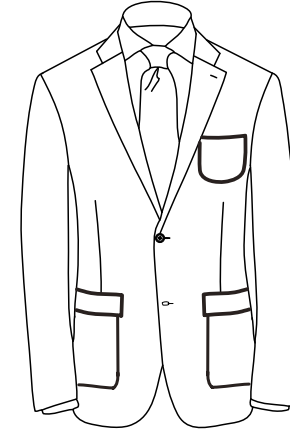
OHNE PATTEN



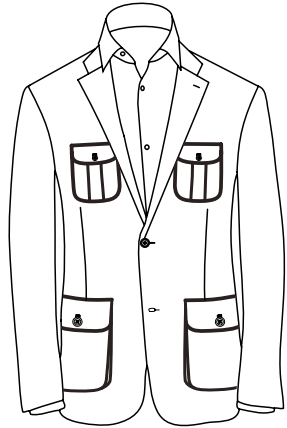
GESCHWEIFTE PATTEN-
TASCHEN MIT KNOPF



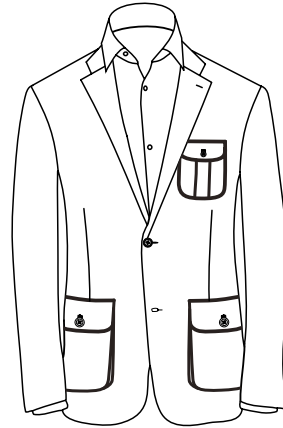
2 AUFGESETZTE TASCHEN
MIT PATTE



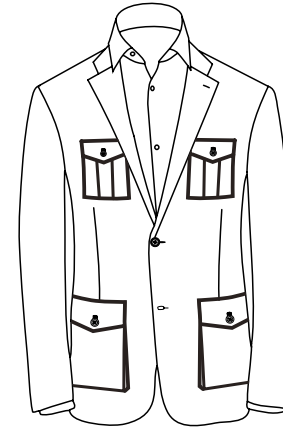
2 AT MIT PATTE, AUFGESETZTE
BRUSTTASCHE PATTE



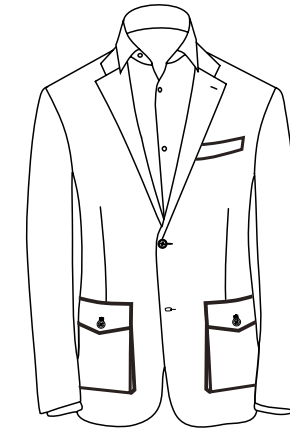
AUFGESETZTE TASCHEN MIT PATTE
MIT 2 BRUSTTASCHE



AUFGESETZTE TASCHEN MIT PATTE
MIT BRUSTTASCHE



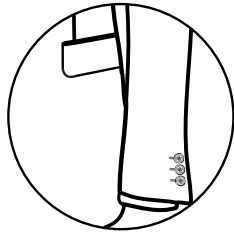
AUFGESETZTE TASCHEN MIT PATTE
MIT 2 BRUSTTASCHE



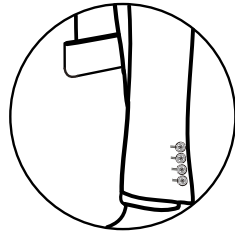
AUFGESETZTE TASCHEN
MIT PATTE

ÄRMELOPTIONEN

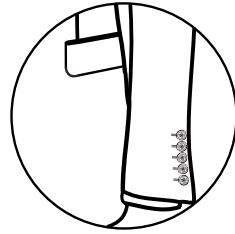
STANDART



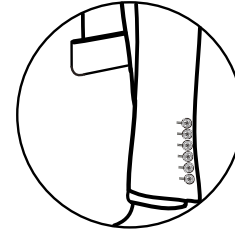
3 KNÖPFE



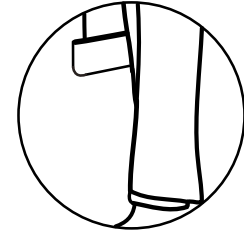
4 KNÖPFE



5 KNÖPFE

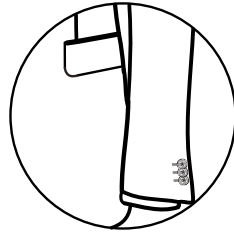


6 KNÖPFE

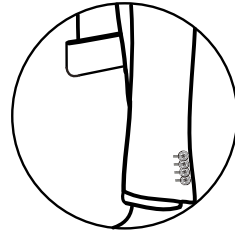


OHNE ÄRMELKNOPFL.

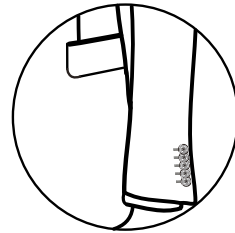
KISSING



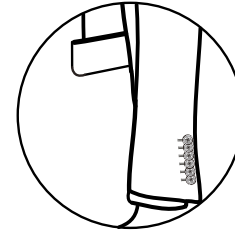
3 KISSING BUTTONS



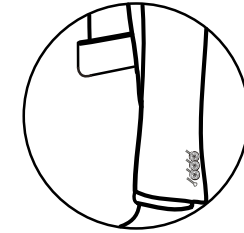
4 KISSING BUTTONS



5 KISSING BUTTONS

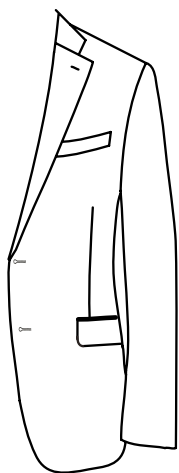


6 KISSING BUTTONS

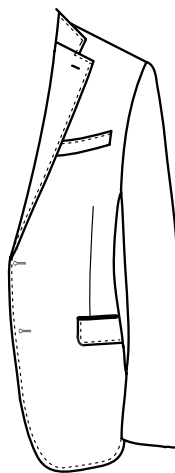


SCHRÄGE KNOPFLÖCHER

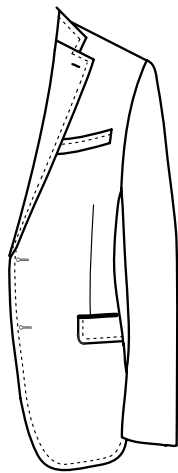
STEEPUNGEN



- OHNE -



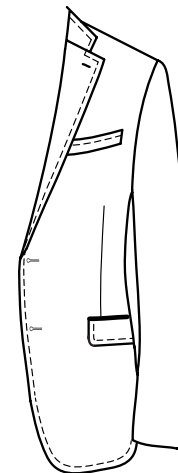
AMF 1 MM



AMF 5 MM



STEEPUNG 2 MM



STEEPUNG 5 MM

OPTIONEN ~ SATIN



SCHWARZES SEIDEN
FACON



FACON AUSSEN SCHWARZ
SATIN



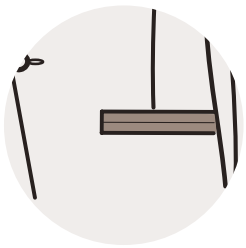
FACON INNEN SCHWARZ
SATIN



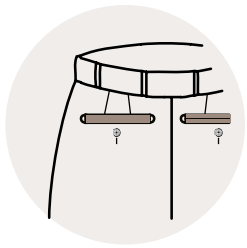
1CM TROTTOIRKANTE
SCHWARZ SATIN



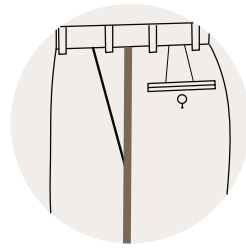
SATINPASPEL ZU SEHEN IM
ZUTATENBUCH



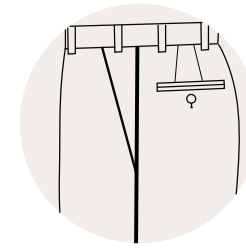
TASCHEN MIT SCHWARZ
SATIN BESATZ



PASPELTASCHEN SATIN
SCHWARZ SATIN

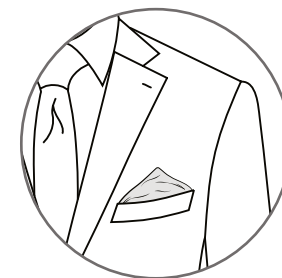
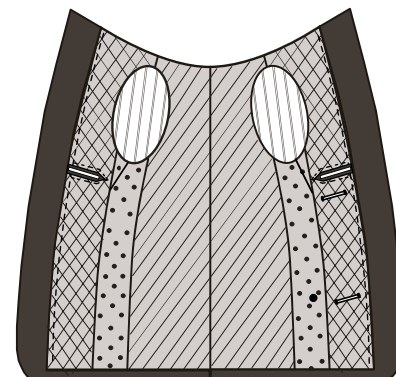
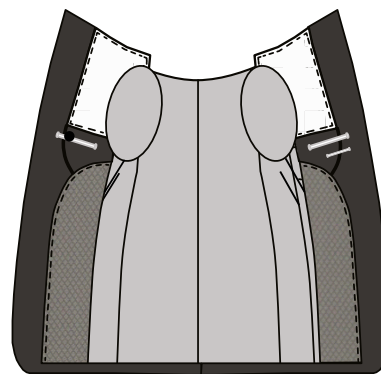
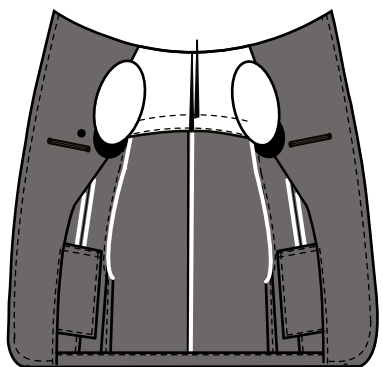
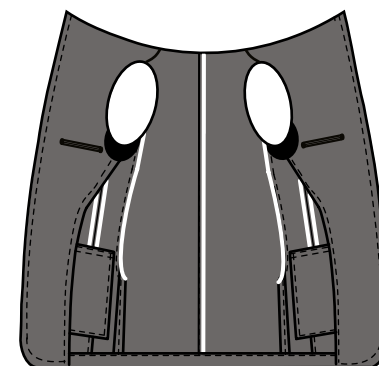
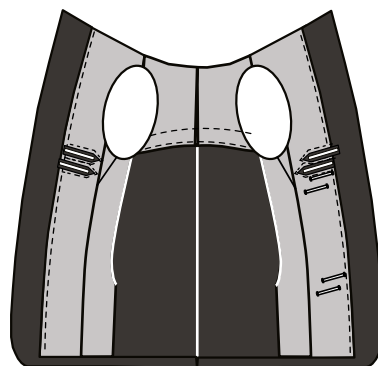
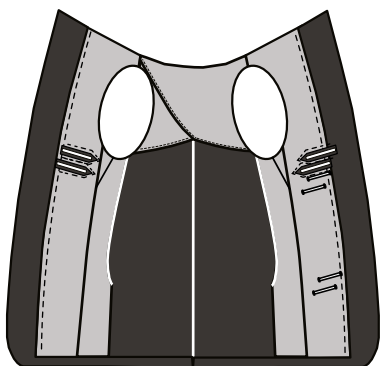
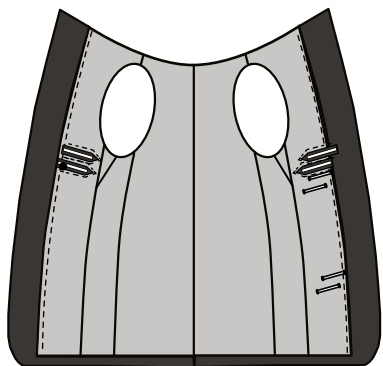


SMOKINGHOSE MIT
SEIDENGALON



BIESE AND DER
SEITENNAHT

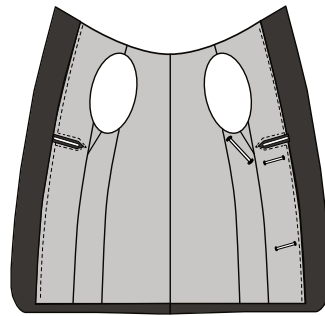
INNENFUTTER



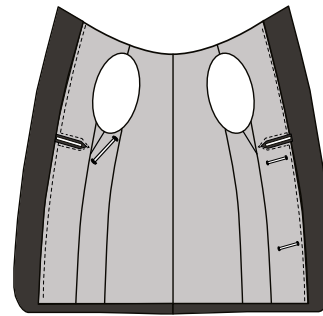
KONTRAST BRUSTTASCHE



INNENFUTTER SEKUNDÄRE OPTIONEN



LINKS HANDYTASCHE



RECHTS HANDYTASCHE

INNENKONSTRUKTION DES SAKKOS



VOLL PICKIERT



HALB - PICKIERTE



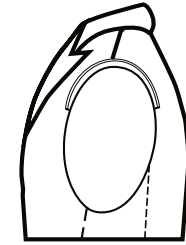
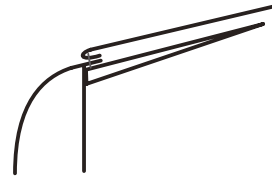
VOLLFIXIERTE PRESTIGE



VOLLFIXIERTE SOFT

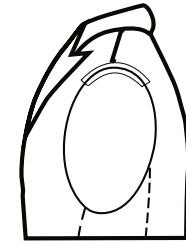
SCHULTER

NAPOLITAN



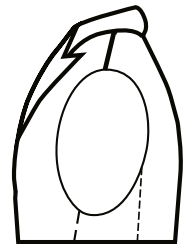
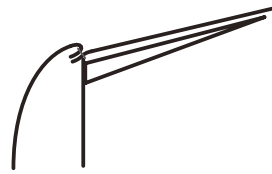
Eingeschobender Ärmel

RUND



Ärmel mit einer weichen Naht eingenäht

STANDART



Traditionell eingenähter Ärmel



HOSEN TASCHEN

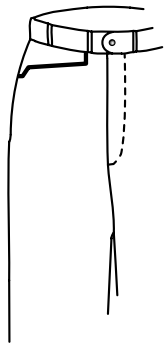
FRONT TASCHEN



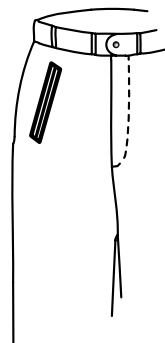
Schräge Seitent



Gerade Seitent

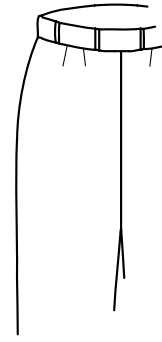


Stecktasche

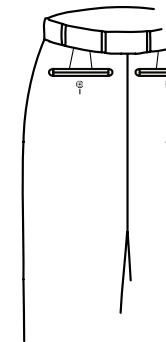


Paspel Tasche

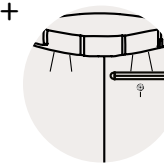
GESÄSSTASCHEN



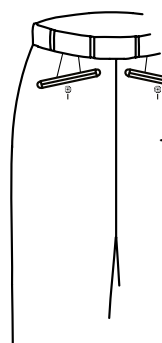
Ohne



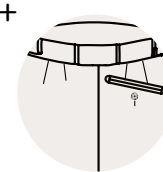
2 Taschen



1 Tasche



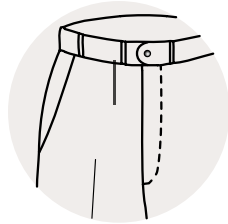
2 schräge Taschen



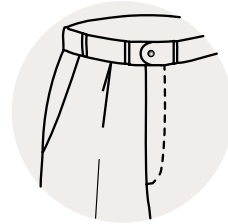
1 schräge Tasche

HOSE ~ FRONT

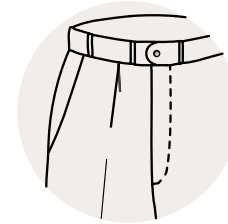
DIESE OPTIONEN SIND NICHT MIT DER STECKTASCHE MÖGLICH!



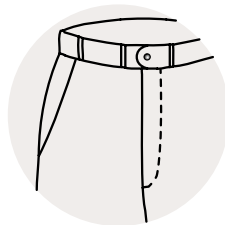
VORDERFRONT MIT ABNÄHER



1 BUNDFALTE NACH AUSSEN



1 BUNDFALTE NACH INNEN



OHNE BÜGELFALTE



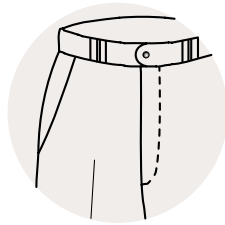
VORDERFRONT OHNE ABNÄHE



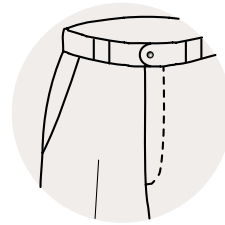
HOSE ~ BUND VERARBEITUNG



**BUND MIT BREITEN
SCHLAUFEN**



**BUND MIT DOPPELTEN
SCHLAUFEN**



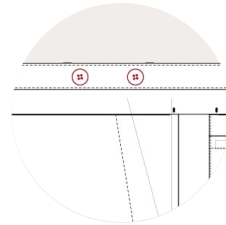
**BUND MIT BREITEN
SCHLAUFEN**



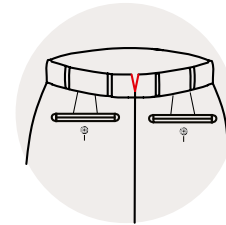
**BUND MIT VERSTELLBARER
SCHLIESSE UND KNOPF**



**BUND MIT VERSTELLB.
SCHNALLE**



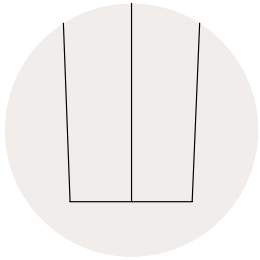
**KNÖPFE INNEN BUND
FÜR HOSENTRÄGER**



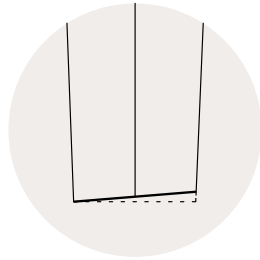
RÜCKENMITTE "V"



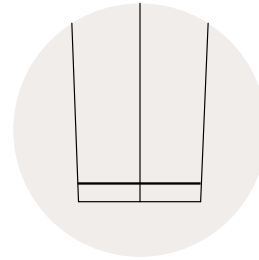
HOSE ~ SAUM VARIANTEN



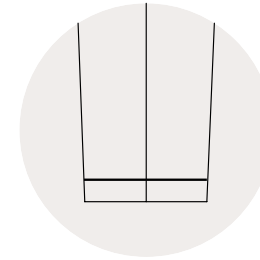
OHNE UMSCHLAG



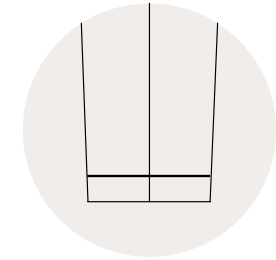
**OHNE UMSCHLAG, VORDERFRONT
1 CM KÜRZER UMSCHLAG**



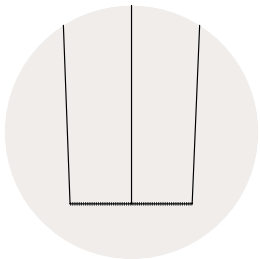
UMSCHLAG 3 CM



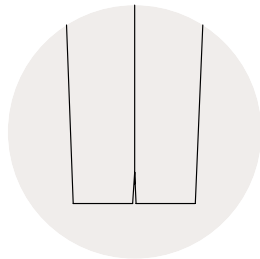
UMSCHLAG 4 CM



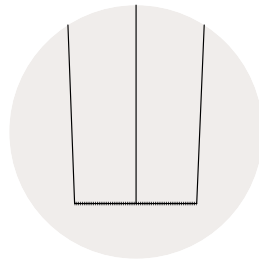
UMSCHLAG 3 CM



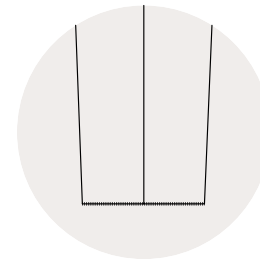
UTEN OFFEN



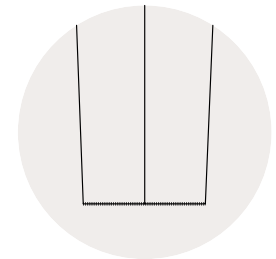
**OHNE UMSCHLAG MIT
SCHILTZE**



**UTEN OFFEN / 3 CM
UMSHLAG**



**UTEN OFFEN / 4 CM
UMSHLAG**



**UTEN OFFEN / 5 CM
UMSHLAG**

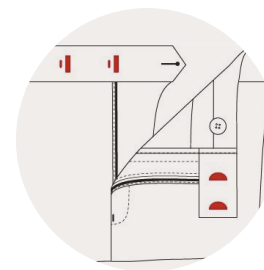
HOSEN ~ DETAILS



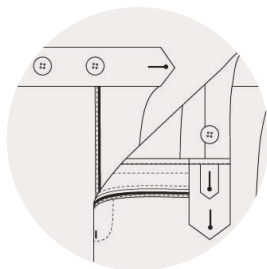
UHRENTASCHE OHNE PATTE



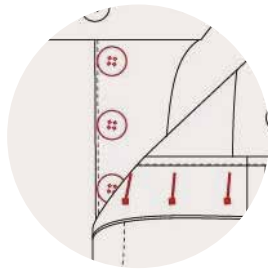
UHRENTASCHE MIT PATTE



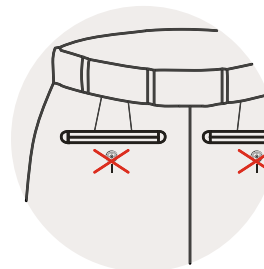
2 HAKENVERSCHLUSS



DOPPELVERSCHLUSS /
2 KNÖPFE

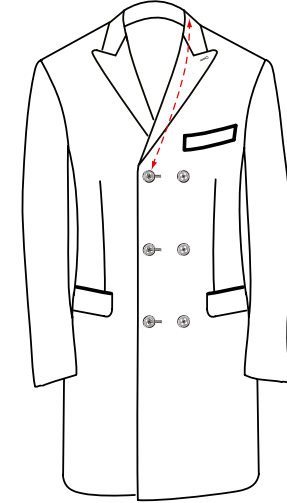
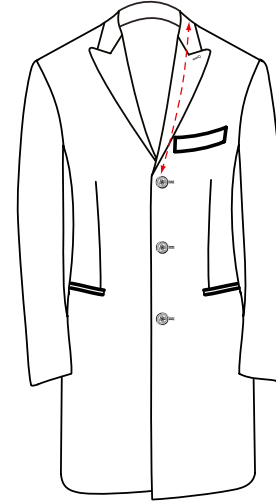
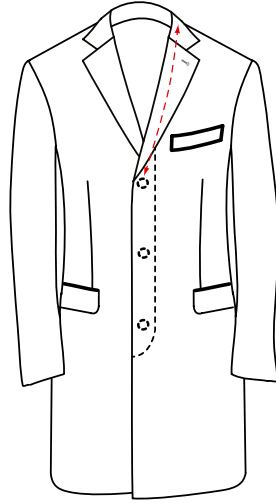
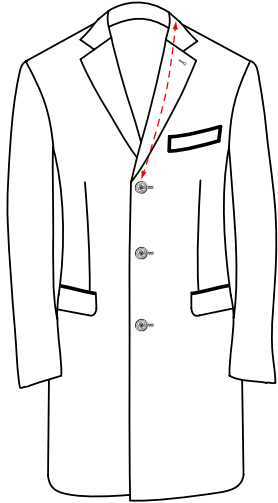


GEKNÖPFTER SCHLITZ

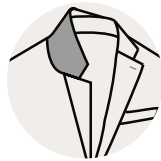


GESÄSSTASCHE OHNE
KNOPFLOCH

MÄNTEL



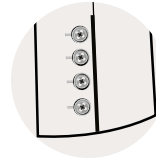
VERBUNDENE FORMEN UND OPTIONS DETAILS:



Option :
Kontrast Unterkragen



Option :
Kontrastkragen
aus anderem Stoff



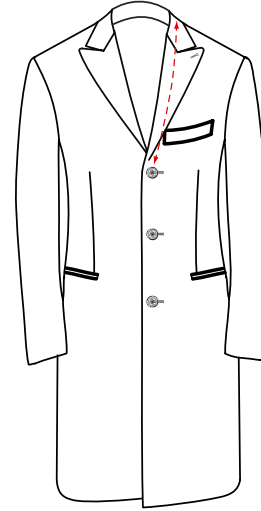
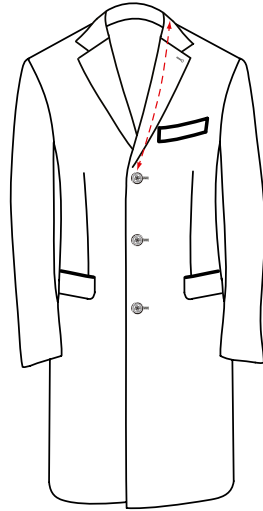
Style :
falsche gerade
Ärmelknopfl



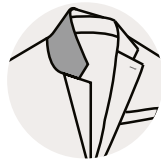
Style :
Klassische Brusttasche



MÄNTEL



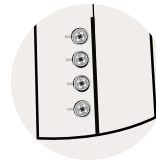
VERBUNDENE FORMEN UND OPTIONS DETAILS:



Option :
Kontrast Unterkragen



Option :
Kontrastkragen
aus anderem Stoff



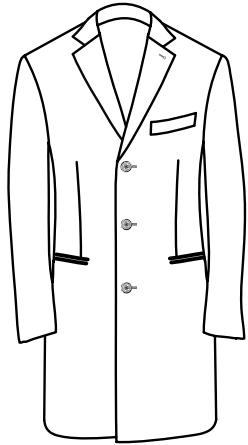
Style :
falsche gerade
Ärmelknopfl



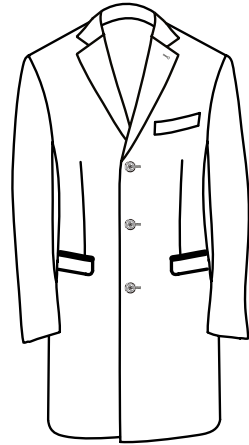
Style :
Klassische Brusttasche



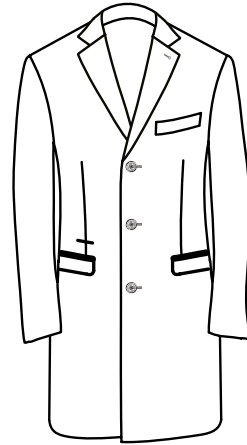
MÄNTEL OPTIONEN



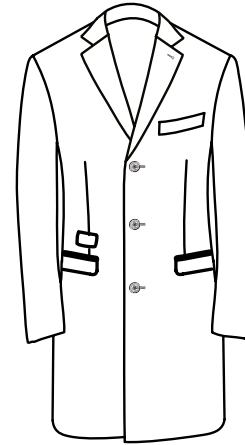
GERADE TASCHEN



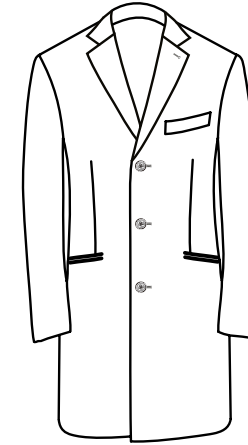
5,5 CM PATTE



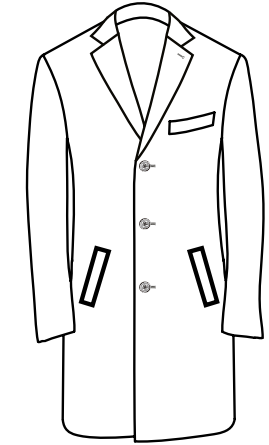
5,5 CM PATTE MIT BILLT.O.PLATTE



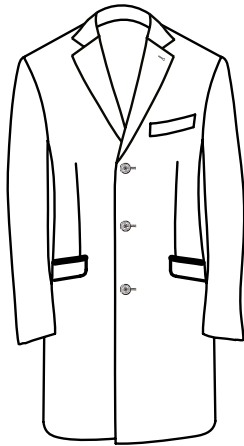
5,5 CM PATTE MIT BILLETASCH



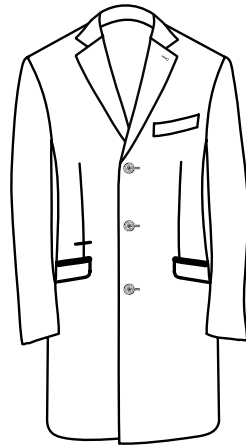
SCHRÄGE TASCHEN OHNE PATTEN



SCHRÄGE TASCHEN

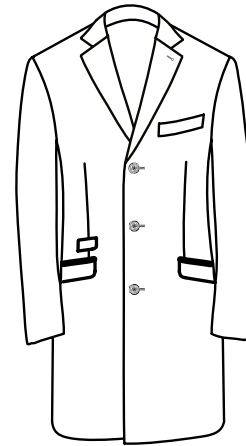


SCHRÄGE TASCHEN PATTEN 5,5 CM



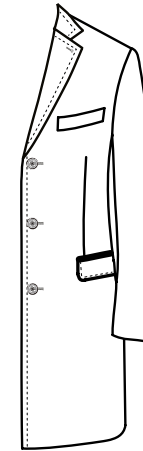
SCHRÄGE PATTENTASCHEN

5,5 cm mit Billettasche
ohne Patte

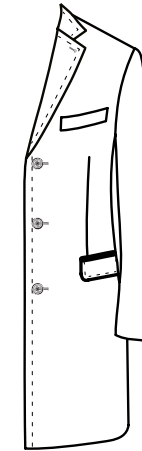


SCHRÄGE PATTENTASCHEN

5,5 cm mit Billett. mit Patte



AMF 5 MM



STITCHING 5 MM

FORMEN & OPTIONEN